

# Contribution of part-year residents to the economic value of trout fishing in the Henry's Fork Watershed



Rob Van Kirk  
Henry's Fork Foundation  
Henry's Fork Watershed Council, Dec. 16, 2025



# Acknowledgments



## HFF Staff

Kamberlee Allison  
Bryce Contor  
Bryce Oldemeyer  
Ben Ortman  
Amber Roseberry  
Weber State Univ.

Dr. Cliff Nowell,  
Dept. of Economics

## IDFG Staff

Jon Flinders  
Dan Garren  
Damon Keen  
Patrick Kennedy  
Jennifer Vincent

## HFF interns

Gary Anderson  
Drew Barnard  
Reid Calhoun  
Sam Cochran  
Maggie Dunn  
Zac Espinosa

## HFF interns

Elliot Martin  
Frannie Nelson  
Chi Hgyuen  
Thacia Schmidt  
Liz Todd  
Sonja Wolke

Funding: Community Foundation of Teton Valley and an  
Anonymous Donor

# Outline

- Introduction and objectives
- Study area
- Methods: fishing effort and economic contribution
- Methods: “part-year residents” and “vacation homes”
- Results: anglers and their economic contribution
- Results: contribution of part-year residents
- Results: property tax value of vacation homes
- Discussion & Conclusions



# Introduction

- Yellowstone region: international fishing destination
- Anglers bring \$ in: fishing is an *export*
- How much is this export worth?
- Traditional view: non-residents vs. residents
- What about part-year resident anglers?
- Link to meeting theme: part-year *residences*



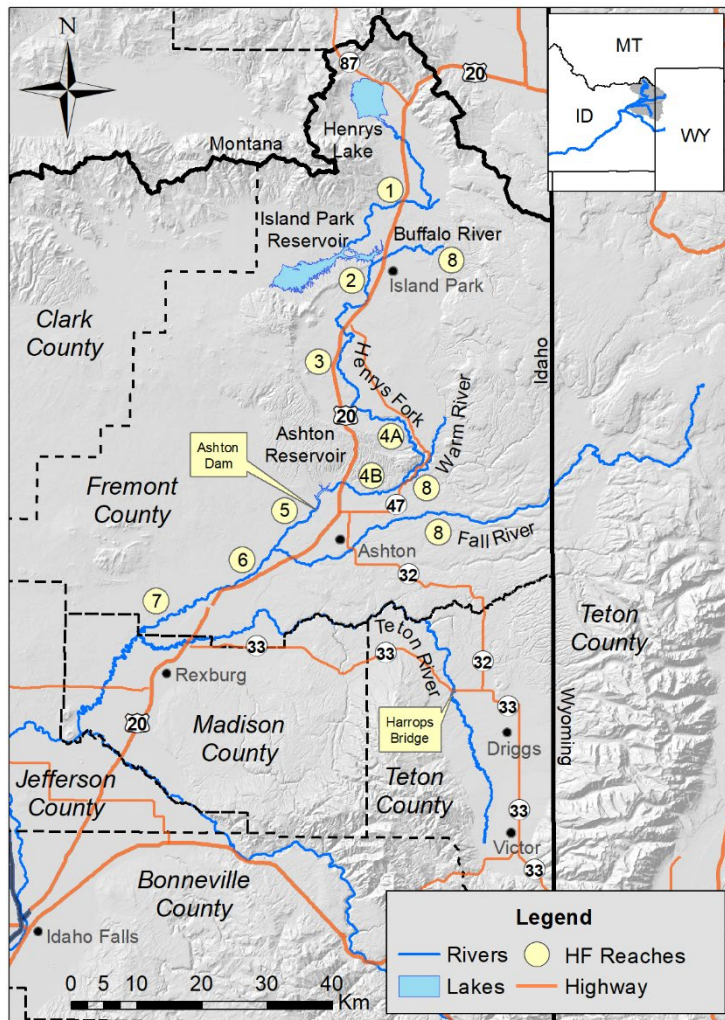
# Introduction

- Yellowstone region: international fishing destination
- Anglers bring \$ in: fishing is an *export*
- How much is this export worth?
- Traditional view: non-residents vs. residents
- What about part-year resident anglers?
- Link to meeting theme: part-year *residences*

## Objectives: Calculate

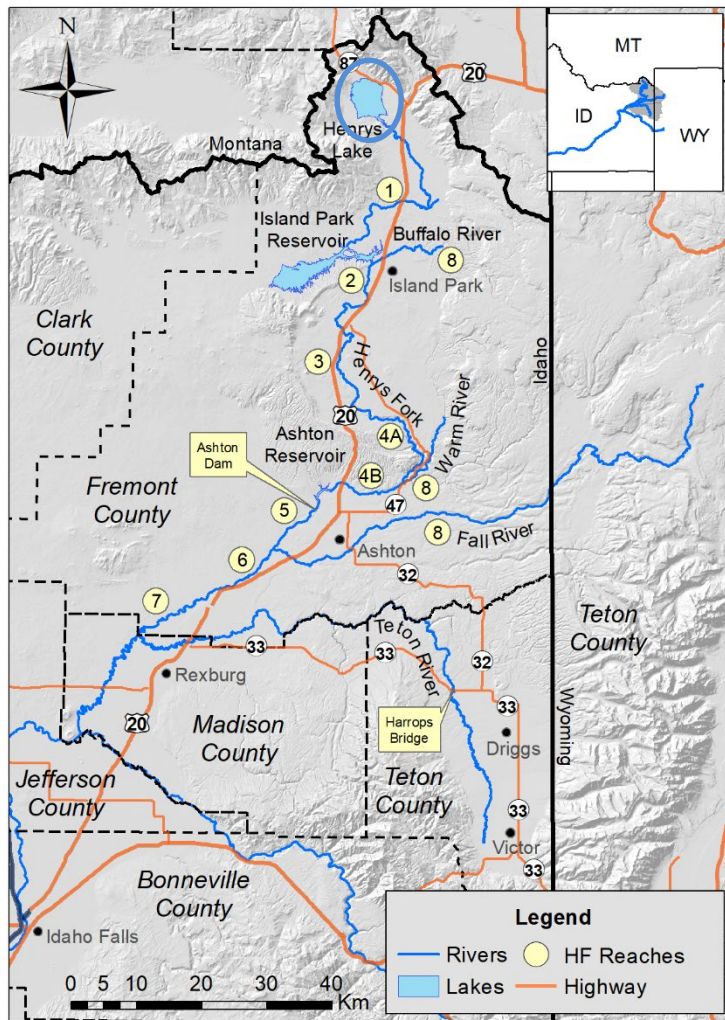
1. Angler spending
2. Value to regional economy
3. Contribution from part-year residents
4. Property tax value of part-year residences





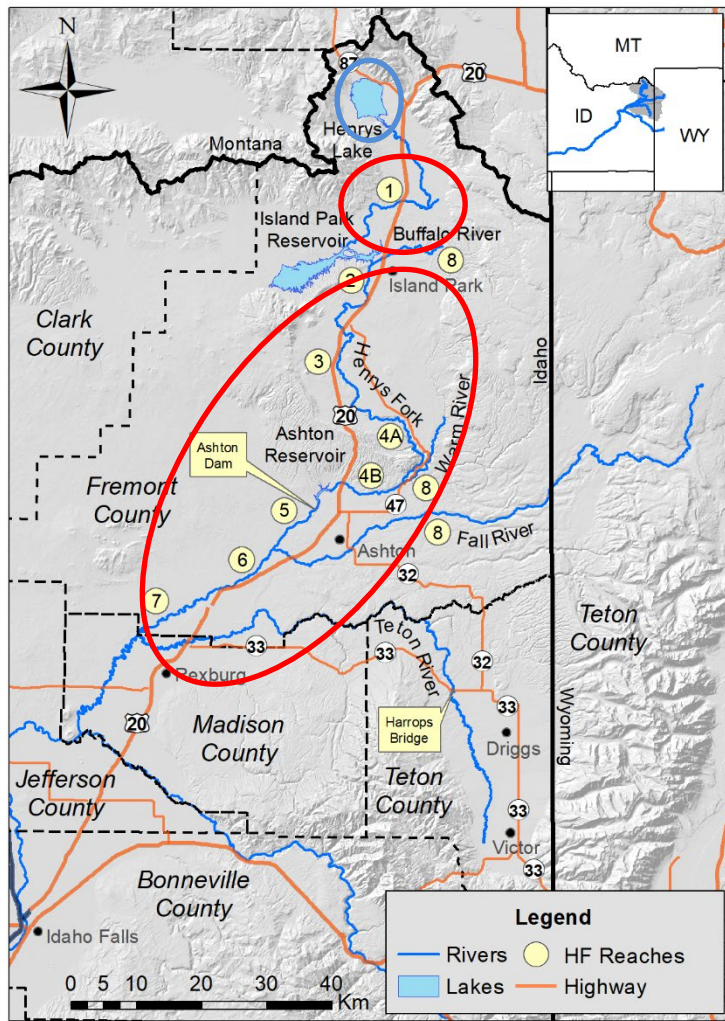
- Six-county Idaho region (+ Teton Co. WY)





- Six-county Idaho region (+ Teton Co. WY)
- Three fisheries:
  - Henrys Lake

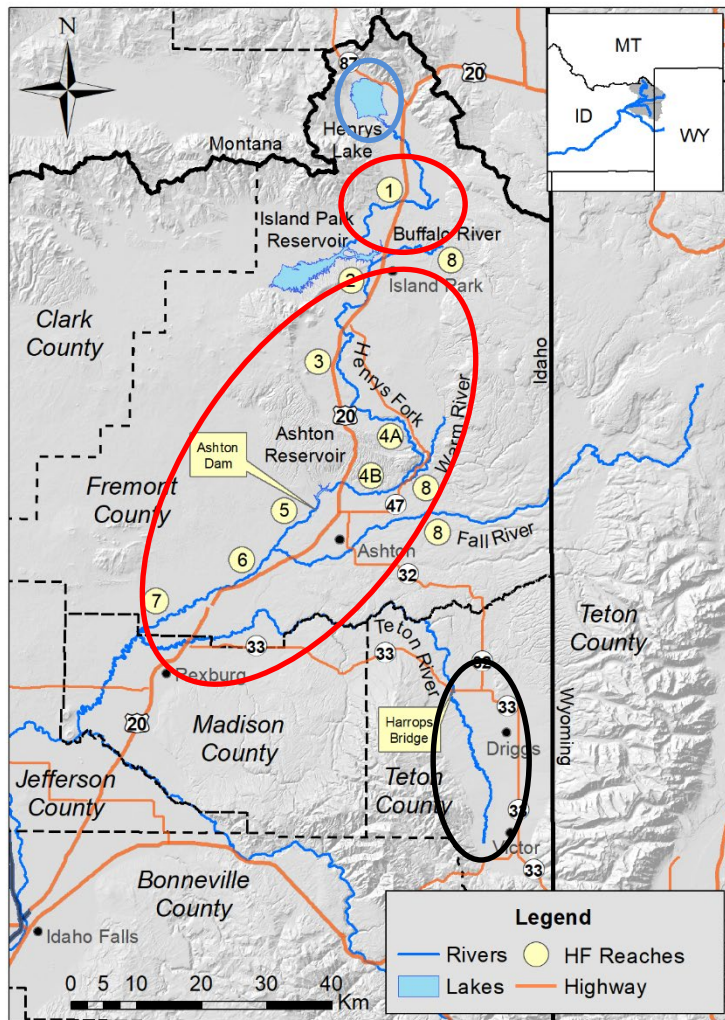




- Six-county Idaho region (+ Teton Co. WY)
- Three fisheries:
  - Henrys Lake
  - Henry's Fork and tributaries







- Six-county Idaho region (+ Teton Co. WY)
- Three fisheries:
  - Henrys Lake
  - Henry's Fork and tributaries
  - Upper Teton River



# Methods: Effort and Economic Value

- Count anglers, extrapolate to whole season
- Effort in *angler days* (1 angler for a one-day trip)
- Surveys distributed at access points; online or paper
- Surveys asked about spending, behavior, demographics
- Total spending = angler days  $\times$  \$/day
- Amount spent in the region by nonresidents is an *export*
- Compare to other economic sectors via IMPLAN model
- Surveys conducted 2016-2019; all reported in 2017 dollars



# Methods: Part-year residents

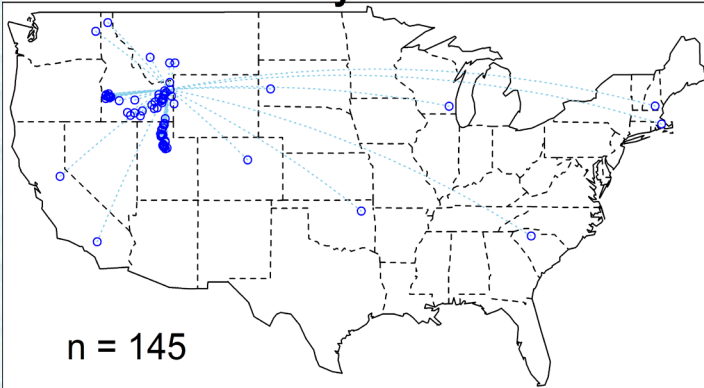
- Owns a home in the region, spends  $< 11$  months there
- Call these “vacation homes”
- Economic contribution
  1. Home maintenance cost/day applied to fishing day  
(lodging expense, included in spending/value calculation)
  2. Additional spending by part-year residents above baseline
  3. Property tax paid on these homes

# Survey responses

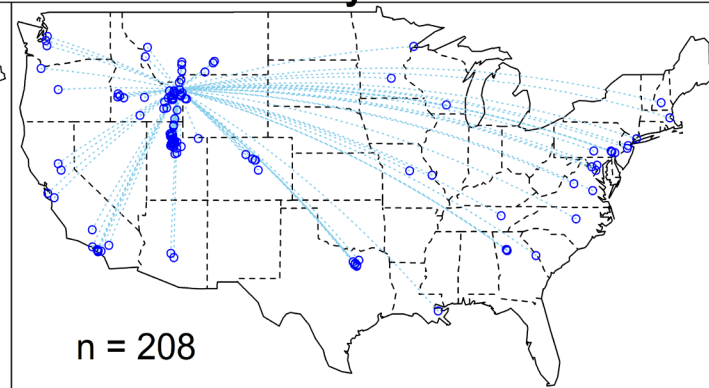
|             | Surveys<br>distributed | Surveys<br>returned | Return rate |
|-------------|------------------------|---------------------|-------------|
| Henrys Lake | 370                    | 152                 | 41.1%       |
| Henrys Fork | 1,012                  | 232                 | 22.9%       |
| Teton River | 517                    | 176                 | 34.0%       |
| TOTAL       | 1,899                  | 560                 | 29.5%       |



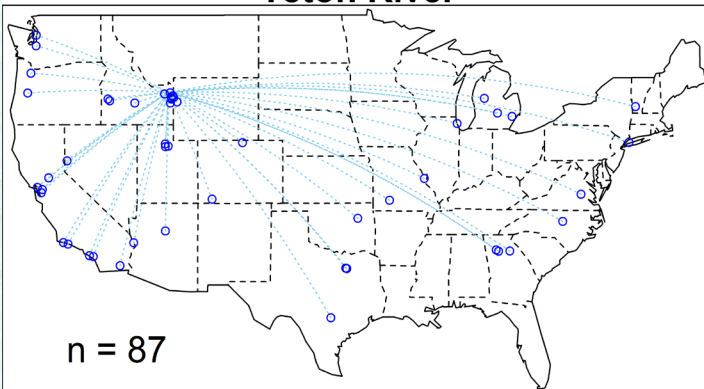
**Henrys Lake**



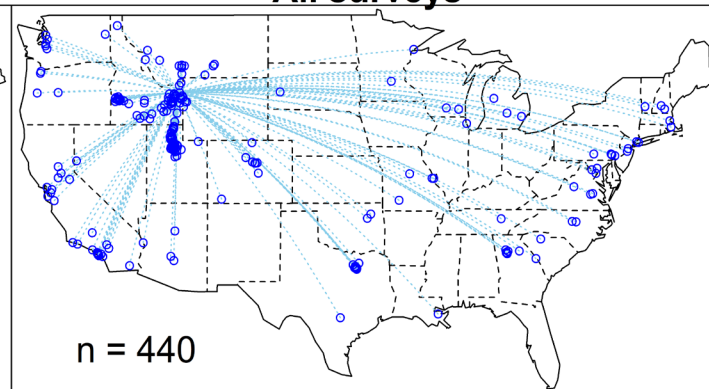
**Henrys Fork**



**Teton River**



**All surveys**



# Angler effort and spending

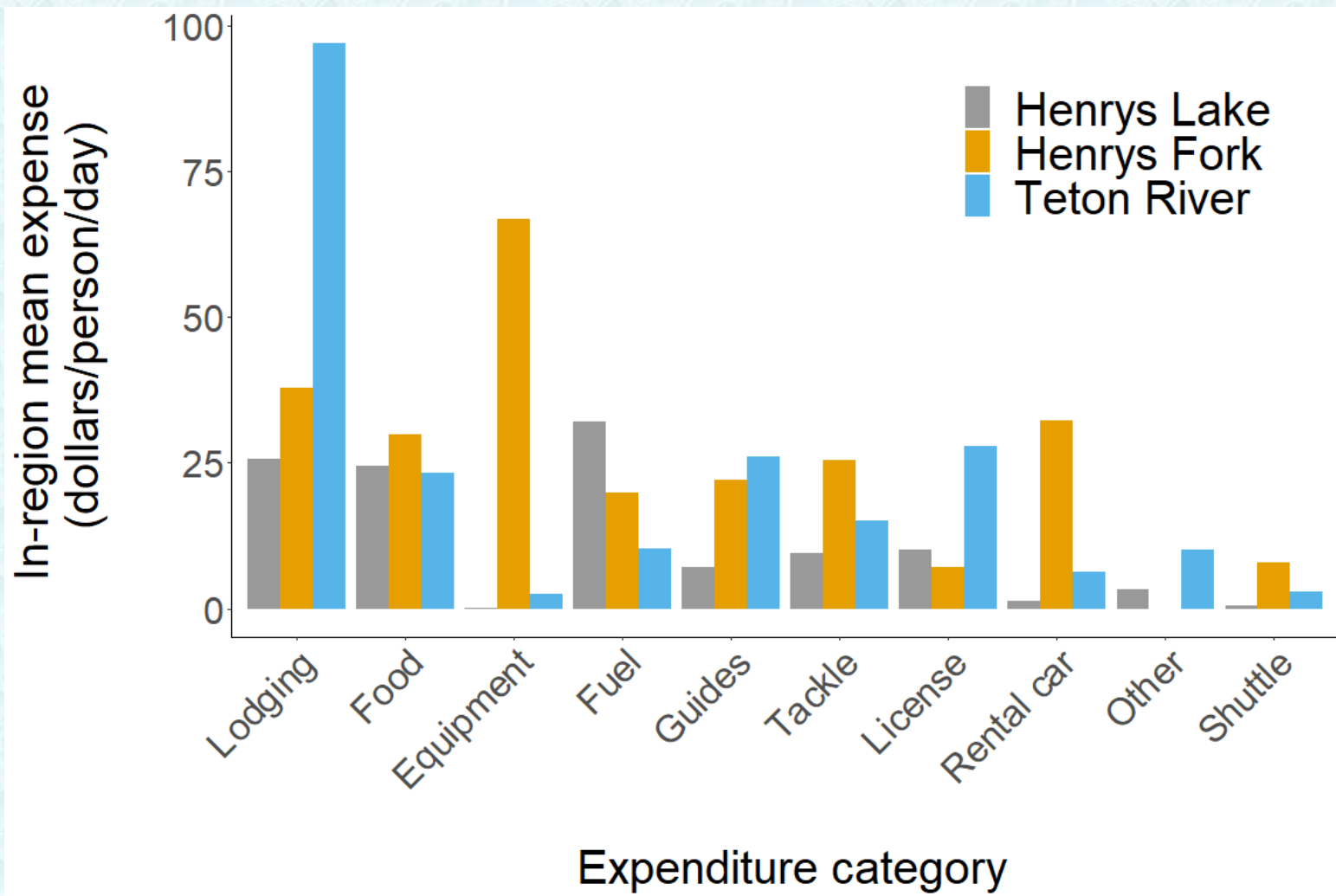
|             | Effort (angler days) | % from non-residents | Daily spending (\$) |               |
|-------------|----------------------|----------------------|---------------------|---------------|
|             |                      |                      | Residents           | Non-residents |
| Henrys Lake | 53,221               | 50.1%                | \$82                | \$222         |
| Henrys Fork | 126,293              | 54.1%                | \$109               | \$421         |
| Teton River | 32,114               | 46.7%                | \$60                | \$469         |



# Angler effort and spending

|             | Effort (angler days) | % from non-residents | Daily spending (\$) |               |
|-------------|----------------------|----------------------|---------------------|---------------|
|             |                      |                      | Residents           | Non-residents |
| Henrys Lake | 53,221               | 50.1%                | \$82                | \$222         |
| Henrys Fork | 126,293              | 54.1%                | \$109               | \$421         |
| Teton River | 32,114               | 46.7%                | \$60                | \$469         |

Similar to previous studies, except Teton River: 4× increase in effort, 9× increase in \$



# Total in-region spending, \$ millions

|                              | Henry's<br>Lake | Henry's<br>Fork | Teton<br>River | TOTALS  |
|------------------------------|-----------------|-----------------|----------------|---------|
| Expenditures by nonresidents | \$3.81          | \$22.90         | \$5.89         | \$32.60 |
| Expenditures by residents    | \$1.99          | \$5.53          | \$1.03         | \$8.55  |
| TOTALS                       | \$5.80          | \$28.43         | \$6.92         | \$41.15 |



# Total in-region spending, \$ millions

|                              | Henry's<br>Lake | Henry's<br>Fork | Teton<br>River | TOTALS  |
|------------------------------|-----------------|-----------------|----------------|---------|
| Expenditures by nonresidents | \$3.81          | \$22.90         | \$5.89         | \$32.60 |
| Expenditures by residents    | \$1.99          | \$5.53          | \$1.03         | \$8.55  |
| TOTALS                       | \$5.80          | \$28.43         | \$6.92         | \$41.15 |

- \$17 million value added to regional economy (0.2%)
- 317 jobs added to regional economy (0.25%)

# Total in-region spending, \$ millions

|                              | Henry's<br>Lake | Henry's<br>Fork | Teton<br>River | TOTALS  |
|------------------------------|-----------------|-----------------|----------------|---------|
| Expenditures by nonresidents | \$3.81          | \$22.90         | \$5.89         | \$32.60 |
| Expenditures by residents    | \$1.99          | \$5.53          | \$1.03         | \$8.55  |
| TOTALS                       | \$5.80          | \$28.43         | \$6.92         | \$41.15 |

- \$17 million value added to regional economy (0.2% of total)
- 317 jobs added to regional economy (0.25% of total)

## Agriculture

- 3.6% of value added to regional economy (18 × higher)
- 4.4% of total jobs

# Results: Vacation homes as lodging

- 24% of total lodging costs

| Lodging option | Average per trip expenditure |
|----------------|------------------------------|
| Private camp   | \$8.49                       |
| Vacation home  | \$8.34                       |
| Hotel/lodge    | \$7.26                       |
| Cabin rental   | \$5.85                       |
| Public camp    | \$4.67                       |
| TOTAL          | \$34.61                      |

- This would have been missed in a traditional approach



# Results: Part-year residents

- 15.2% of angler population
- Fished 17.5 days/year vs. 9.2 days/year for others
- 25% of total angler days
- Additional 8.3 days/year = 23% of total non-resident spending

# Results: Part-year residents

- 15.2% of angler population
- Fished 17.5 days/year vs. 9.2 days/year for others
- 25% of total angler days
- Additional 8.3 days/year = 23% of total non-resident spending
- PLUS

|             | # part-year resident anglers | % of total angler population | Median vacation home value range (thousands) | Total property taxes paid |
|-------------|------------------------------|------------------------------|--|---------------------------|
| Henrys Lake | 1,125                        | 19.1%                        | \$200-499                                    | \$4,132,332               |
| Henrys Fork | 1,156                        | 11.2%                        | \$500-999                                    | \$7,051,516               |
| Teton River | 513                          | 31.5%                        | \$500-999                                    | \$3,104,412               |
| TOTAL       | 2,794                        | 15.2%                        | \$500-999                                    | \$14,288,260              |

# Discussion and Conclusions

- Economic value of fishery depends on scale
  - Island Park/Ashton vs. 7-county region vs. upper Snake basin
- Lodging is highest expenditure
- Vacation home maintenance 24% of that category
- Part-year resident anglers:
  - fish almost twice as many days as others
  - Account for 25% of total effort
  - Account for 23% of economic value via additional days
  - Pay \$10s millions in property taxes (22% of total in 2017)
- Optimal balance of vacation home development vs. impacts?



# Questions?

Contact: [rob@henrysfork.org](mailto:rob@henrysfork.org)

